

Identification Report

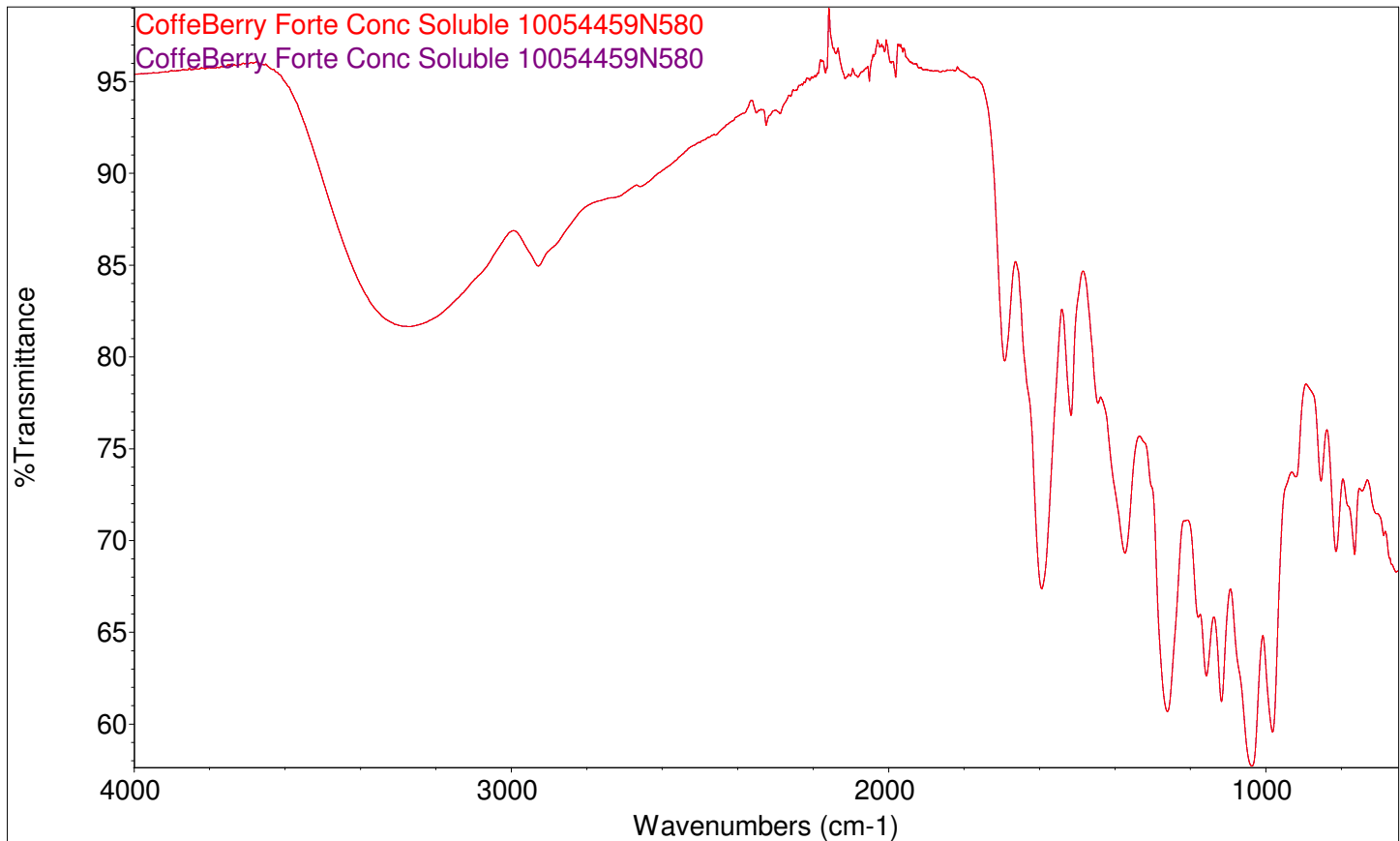
Reporting Date: Mon Aug 24 16:06:54 2015 (GMT-05:00)

Sample: CoffeeBerry Forte Soluble Conc. 40%

Sample Lot No.: 10054459N580

Internal Reference Std. Lot No.: 10054459N580

FTIR Spectra



Spectra generated using Nicolet iS50 FT-IR

Number of sample scans: 32
Number of background scans: 32
Resolution: 4.000
Sample gain: 4.0
Optical velocity: 0.4747
Aperture: 100.00

Comparison Results:

Mon Aug 24 16:06:54 2015 (GMT-05:00)

QCHECK:
Spectrum: CoffeBerry Forte Conc Soluble 10054459N580
QCheck List:

Correlation Reference Title	QCheck Region
1.0000 CoffeBerry Forte Conc Soluble 10054459N580	4000.0-400.0

Approved By:

Adam Kowalewicz

Senior Analytical Research
Chemist

Boris Nemzer

Boris Nemzer, Ph.D.
Director of Quality Assurance