



# National Animal Supplement Council



## Preferred Supplier Data Sheet (PSDS) for Raw Material Suppliers and Contract Manufacturers

All Raw Material Suppliers and Contract Manufacturers must provide the information requested in this form as part of the qualification procedure for acceptance as a Preferred Supplier by NASC. Any fields not applicable to your company should be completed by entering N/A.

Please return copies of the completed form(s) and requested certifications electronically to Bill Parker at [b.parker@nasc.cc](mailto:b.parker@nasc.cc) or mail to:

NASC  
PO Box 5168  
Sun City West, AZ 85376

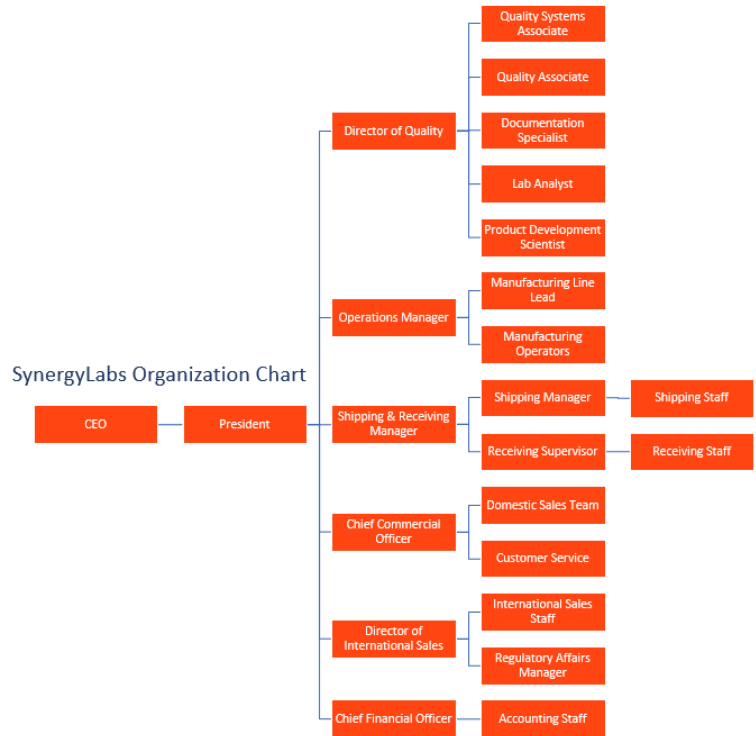
This information will be posted in the Members Section of the NASC Web Site for companies to download for use in qualifying and accepting the supplier.

Questions: contact Bill Parker at the NASC office (760-751-3360 X105)

SECTION 1: SITE OVERVIEW			
NAME AND ADDRESS OF COMPANY OR SITE RESPONSIBLE:	SynergyLabs LLC 9479 Synergy Way, Hildebran, North Carolina 28637		
WEB SITE:	<a href="https://synergylabs.com/">https://synergylabs.com/</a>		
CONTACT PERSON	Megan Gouge, Director of Quality		
TELEPHONE NUMBER:	828-597-0400 ext. 304		
E-MAIL:	mgouge@synergylabs.com		
BUSINESS DESCRIPTION / SITE DETAILS:			
FACILITY SIZE / # EMPLOYEES:	250,000 sqft / 117 Employees	DATE EST:	Founded in 1990
GENERAL AND PRODUCT LIABILITY INSURANCE LEVELS:	General Liability: \$1MM per occurrence, \$2MM aggregate, and \$3MM umbrella	UNION:	No
SPECIFY TYPE(S) OF INGREDIENT(S), MANUFACTURING CAPABILITIES, PRODUCTS PRODUCED/SUPPLIED BY THE SITE, SERVICES AND THEIR INTENDED APPLICATIONS:	SynergyLabs specializes in cold-extruded soft chews for dogs and cats. In addition, the facility has the capability to produce companion animal grooming aids including gels, liquids, and pastes.		
SITE ACTIVITIES CONDUCTED:	Blending, Extruding, Packaging		

**Preferred Supplier Data Sheet (PSDS) for  
 Raw Material Suppliers and Contract Manufacturers**

ORGANIZATIONAL CHART:



**SECTION 2: EVIDENCE OF COMPLIANCE**

INDEPENDENT QUALITY CERTIFICATIONS:	Yes IF YES, SPECIFY: 21 CFR Part 111	
	QUALITY MANAGEMENT SYSTEM STANDARD:	21 CFR Part 111
	APPROVAL CERTIFICATES:	Yes
	NUMBER AND NAME OF REGISTRAR WHO PROVIDED CERTIFICATE OF APPROVAL:	Certification Number – EFAC2022-0105-01 Eurofins Food Assurance
OTHER CERTIFICATIONS OR EXTERNAL AUDIT PROGRAMS:	Eurofins GMP, Certificate Number EFA2022-0105-02, Eurofins Food Assurance SQF Edition 9 Module 2 and 4, Certificate Number 33777   173091	
WEB SITE:	<a href="https://synergylabs.com/">https://synergylabs.com/</a>	
DATE OF LAST FDA OR STATE AGENCY CGMP INSPECTION AND OUTCOME (PROVIDE COPY OF REPORT OF OBSERVATIONS FROM LAST FDA OR STATE INSPECTION):	N/A	



National Animal Supplement Council



**Preferred Supplier Data Sheet (PSDS) for  
Raw Material Suppliers and Contract Manufacturers**

<b>SECTION 3: RAW MATERIAL SUPPLIERS &amp; CONTRACT MANUFACTURERS ONLY</b>	
DO YOU HAVE Q/C RELEASE REQUIREMENTS FOR ALL SHIPMENTS WHEN THEY ARRIVE: (YES / NO)	Yes
DO YOU SAMPLE EVERY LOT OF RAW MATERIALS RECEIVED: (YES / NO)	Yes
DO YOU RE-PACK LARGE QUANTITIES INTO SMALLER QUANTITIES AT YOUR FACILITY: (YES / NO)	No
DO YOU SAMPLE EVERY LOT: (YES / NO)	Yes
DO YOU PERFORM ANY BLENDING AT YOUR FACILITY (YES / NO)	Yes
<b>LIST ALL INGREDIENTS HELD AT YOUR FACILITY (ATTACH A LIST/DOCUMENT IF AVAILABLE: (YES / NO))</b>	
PHARMACEUTICAL: N/A	No
NUTRITIONAL: See attached	Yes
BOTANICAL: See attached	Yes
MINERAL: See attached	Yes
ENZYME: See attached	Yes
HORMONE: See attached	No
PROBIOTIC: See attached	Yes
CHEMICAL (OTHER): See attached	Yes
<b>METHODS CONDUCTED IN FACILITY: (YES / NO)</b>	
DO YOU USE AN IN-HOUSE LOT NUMBERING SYSTEM?	Yes
DO YOU EVER MIX MULTIPLE LOTS OF THE SAME INGREDIENT WHEN YOU BLEND?	Yes, all lots traced to each batch
<b>TESTING INFORMATION:</b>	
<b>*IF YOU RELY ON BOTH IN-HOUSE AND OUTSIDE CONTRACT LABS, PLEASE FILL OUT BOTH SECTIONS*</b>	
DOES THIS FACILITY RELY ON AN <b>IN-HOUSE</b> LAB? (YES / NO)	No
IN-HOUSE TESTS PERFORMED: (YES / NO)	No
POTENCY ASSAY OF RAW MATERIALS? (YES / NO)	Yes (Contract Lab)
RAW MATERIAL ASSAY? (YES / NO)	Yes (Contract Lab)
MICROBIAL? (YES / NO – IF YES SPECIFY)	Yes, Listeria, Salmonella, Enterobacteriaceae
pH? (YES / NO)	Yes
MOISTURE? (YES / NO)	Yes
ELEMENTAL PESTICIDES? (YES / NO – IF YES SPECIFY)	Yes (See Contract Lab Section)
HEAVY METALS? (YES / NO – IF YES SPECIFY)	Yes (See Contract Lab Section)
OTHER? (YES / NO – IF YES SPECIFY)	Yes, Water Activity
<b>IF YOU HAVE AN IN-HOUSE LAB</b> PLEASE SPECIFY WHICH LAB ACCREDITATION ORGANIZATION(S) YOU ARE AFFILIATED WITH:	N/A



National Animal Supplement Council



**Preferred Supplier Data Sheet (PSDS) for  
Raw Material Suppliers and Contract Manufacturers**

<b>OUTSIDE CONTRACT LABS USED</b>	
PLEASE LIST YOUR MOST FREQUENTLY USED CONTRACT LABS AND THEIR ACCREDITATION STATUS: (e.g., ISO, FDA, USDA, AOAC, USP, NSF, NPA, A2LA, ANSI, ETC.) <b>*PLEASE PROVIDE ACCREDITATION NUMBER*</b>	
<b>NAME OF LAB #1:</b>	
ADDRESS / LOCATION:	Midwest Laboratories 13611 B Street, Omaha, NE 68144-3693
CONTACT NAME / PHONE NUMBER:	Kory Patera / 402-829-9854
LIST ANY CERTIFICATIONS FOR THE LAB:	ISO/IEC 17025:2017, Accreditation Number #2853.01/.02
<b>TESTING PERFORMED BY THE OUTSIDE LAB:</b>	
POTENCY ASSAY OF RAW MATERIALS? (YES / NO)	Yes
RAW MATERIAL ASSAY? (YES / NO)	Yes
MICROBIAL? (YES / NO – IF YES SPECIFY)	Yes, Yeast & Mold, Listeria, Salmonella, Enterobacteriaceae, E. coli, Staphylococcus, Total Aerobic Plate Count, Coliforms
pH? (YES / NO)	Yes
MOISTURE? (YES / NO)	Yes
ELEMENTAL PESTICIDES? (YES / NO – IF YES SPECIFY)	Yes; Glyphosate & AMPA, Organochlorine, Organophosphorus, Neutral Extractable
HEAVY METALS? (YES / NO – IF YES SPECIFY)	No
OTHER? (YES / NO – IF YES SPECIFY)	Water Activity, Guaranteed Analysis (Moisture, Protein, Fat, Fiber, Ash)
<b>NAME OF LAB #2:</b>	
ADDRESS / LOCATION:	American Testing Lab 5820 Oberlin Drive Suite 108 San Diego, CA 92121
CONTACT NAME / PHONE NUMBER:	Chris Lozano / 949-690-1341
LIST ANY CERTIFICATIONS FOR THE LAB:	ISO/IEC 17025:2017, Accreditation Number AGS-US091517-1/2
<b>TESTING PERFORMED BY THE OUTSIDE LAB:</b>	
POTENCY ASSAY OF RAW MATERIALS? (YES / NO)	Yes
RAW MATERIAL ASSAY? (YES / NO)	Yes
MICROBIAL? (YES / NO – IF YES SPECIFY)	Yes, Yeast & Mold, Listeria, Salmonella, Enterobacteriaceae, E. coli, Staphylococcus, Total Aerobic Plate Count, Coliforms
pH? (YES / NO)	Yes
MOISTURE? (YES / NO)	Yes
ELEMENTAL PESTICIDES? (YES / NO – IF YES SPECIFY)	No
HEAVY METALS? (YES / NO – IF YES SPECIFY)	Yes; As, Cd, Hg, Pb
OTHER? (YES / NO – IF YES SPECIFY)	Water Activity, Guaranteed Analysis (Moisture, Protein, Fat, Fiber, Ash)
<b>NAME OF LAB #3:</b>	
ADDRESS / LOCATION:	Eurofins Scientific Inc. 11822 North Creek Parkway N, #110 Bothell, WA 98011
CONTACT NAME / PHONE NUMBER:	Marty Imler / 858-568-7175
LIST ANY CERTIFICATIONS FOR THE LAB:	FDA Registration 18294549426,
<b>TESTING PERFORMED BY THE OUTSIDE LAB:</b>	
POTENCY ASSAY OF RAW MATERIALS? (YES / NO)	Yes
RAW MATERIAL ASSAY? (YES / NO)	Yes
MICROBIAL? (YES / NO – IF YES SPECIFY)	Yes, Yeast & Mold, Listeria, Salmonella, Enterobacteriaceae, E. coli, Staphylococcus, Total Aerobic Plate Count, Coliforms
pH? (YES / NO)	Yes
MOISTURE? (YES / NO)	Yes
ELEMENTAL PESTICIDES? (YES / NO – IF YES SPECIFY)	Yes; Multi-residue Pesticide Screening
HEAVY METALS? (YES / NO – IF YES SPECIFY)	Yes
OTHER? (YES / NO – IF YES SPECIFY)	Water Activity, Guaranteed Analysis (Moisture, Protein, Fat, Fiber, Ash)



**Preferred Supplier Data Sheet (PSDS) for  
Raw Material Suppliers and Contract Manufacturers**

**SECTION 4: CGMP COMPLIANCE DETAILS**

PROVIDE A BRIEF SUMMARY OF HOW THE SUPPLIER COMPLIES WITH EACH APPLICABLE ELEMENT OF THE CURRENT GMP GUIDELINES. NON-APPLICABLE ELEMENTS SHOULD BE NOTED AS SUCH.  
 SynergyLabs is compliant with 21 CFR Part 111 and SQF Module 2 and 4 (Reference attached certifications). Standard operating procedures, work instructions, and forms are established through a document control system to maintain compliance. Internal audits are performed monthly to verify compliance, including performance of an internal audit at least annually by a third-party auditor beyond the annual re-certification audits.

IS FACILITY ISO CERTIFIED? YES / NO: IF YES SPECIFY THE ISO STANDARD AND ATTACH CURRENT CERTIFICATE.	No
--	----

LIST AND ATTACH ANY OTHER CERTIFICATIONS OR EXTERNAL AUDIT PROGRAMS (E.G., NSF, USP, NPA, ISO, ETC.):	21 CFR Part 111, Certificate Number: EFAC2022-0105-01
--	---

SPECIFY MOST RECENT FACILITY INSPECTIONS BY STATE, FEDERAL, OR  
FOREIGN AGENCY (DATE OF INSPECTION, AND RESULTS OF THE INSPECTION SPECIFY AGENCY):

DATE	INSPECTION AGENCY	RESULTS OF THE INSPECTION

**SECTION 5: ADDITIONAL INFORMATION**

Hazard Plan (HACCP) / DATE IMPLEMENTED:	Yes
---	-----

STATISTICAL PROCESS CONTROL/PROCESS ANALYTICAL CONTROL:	Yes
---	-----

CORPORATE BIOTERRORISM ACT COMPLIANCE:	Yes
--	-----

DESCRIBE ALL MEASURES TAKEN BY FACILITY TO ENSURE PRODUCT QUALITY AND PRODUCT CONTAMINATION PREVENTION.	SynergyLabs follows GMP standards through the issuance of procedures, work instructions, and forms. Control measures are established within the Food Safety Plan, including a HACCP risk assessment. A brief summary of controls begin with supplier qualification and are established at each processing step thereafter including incoming raw material quality inspection and analysis, production gowning requirements, point of use material inspection, environmental foreign material risk assessment and routine inspections, cleaning procedures with qualified food-grade chemicals, verification of cleaning chemical concentration, and environmental monitoring of the production facility for pathogenic organisms. Furthermore, a food defense plan is active and includes controls as required by the site risk assessment such as facility access controls, labeling requirements, visitor tracking, and periodic challenges are performed to verify defined controls.
---	---

MEMBERSHIP IN INDUSTRY TRADE GROUPS:	NASC, APPA, WPA, PIDA
--------------------------------------	-----------------------

**SECTION 6: CONTRACT MANUFACTURERS**

HOW DO YOU GUARANTEE BANNED SUBSTANCES (STIMULANTS, NARCOTICS, STEROIDS, DIURETICS, BETA-2-AGONISTS, BETA BLOCKERS, MASKING AGENTS, OR SIMILAR SUBSTANCES) ARE NOT PRESENT IN YOUR INGREDIENTS?	SOP PU003 – Supplier Qualification Program, published banned chemicals document
---	---

HOW DO YOU QUALIFY AN INGREDIENT MANUFACTURER?	Initial qualification of a supplier is performed through completion of questionnaire that creates a profile of the supplier's quality controls and relevant certifications. Suppliers are reviewed and approved by a trained SQF Practitioner / PCQI including the questionnaire and historical review of the company's regulatory status (i.e., FDA inspections, 483 issuances, etc.). Suppliers are continually monitored through a SCAR system and further controls implemented as necessary, up to and including termination of relationships with suppliers if high risks are identified.
--	--



# National Animal Supplement Council




## Preferred Supplier Data Sheet (PSDS) for Raw Material Suppliers and Contract Manufacturers

### **SECTION 7: AUTHENTICITY OF INFORMATION & CONTACT INFORMATION**

COMPANY NAME:	SynergyLabs, LLC		
CONTACT NAME:	Megan Gouge	TITLE:	Director of Quality
E-MAIL ADDRESS:	mgouge@synergylabs.com		

BY SIGNING BELOW, I CERTIFY THAT THE INFORMATION GIVEN BY ME TO THE NATIONAL ANIMAL SUPPLEMENT COUNCIL (NASC), INC. IS TRUE AND COMPLETE TO THE BEST OF MY KNOWLEDGE. I UNDERSTAND THAT IF THE INFORMATION PROVIDED IS NOT THOROUGH AND COMPLETE, NASC WILL REJECT THE FORM AND RESUBMISSION OF THE FORM WILL BE REQUIRED.

	June 02, 2023
<b>SIGNATURE</b>	<b>DATE</b>